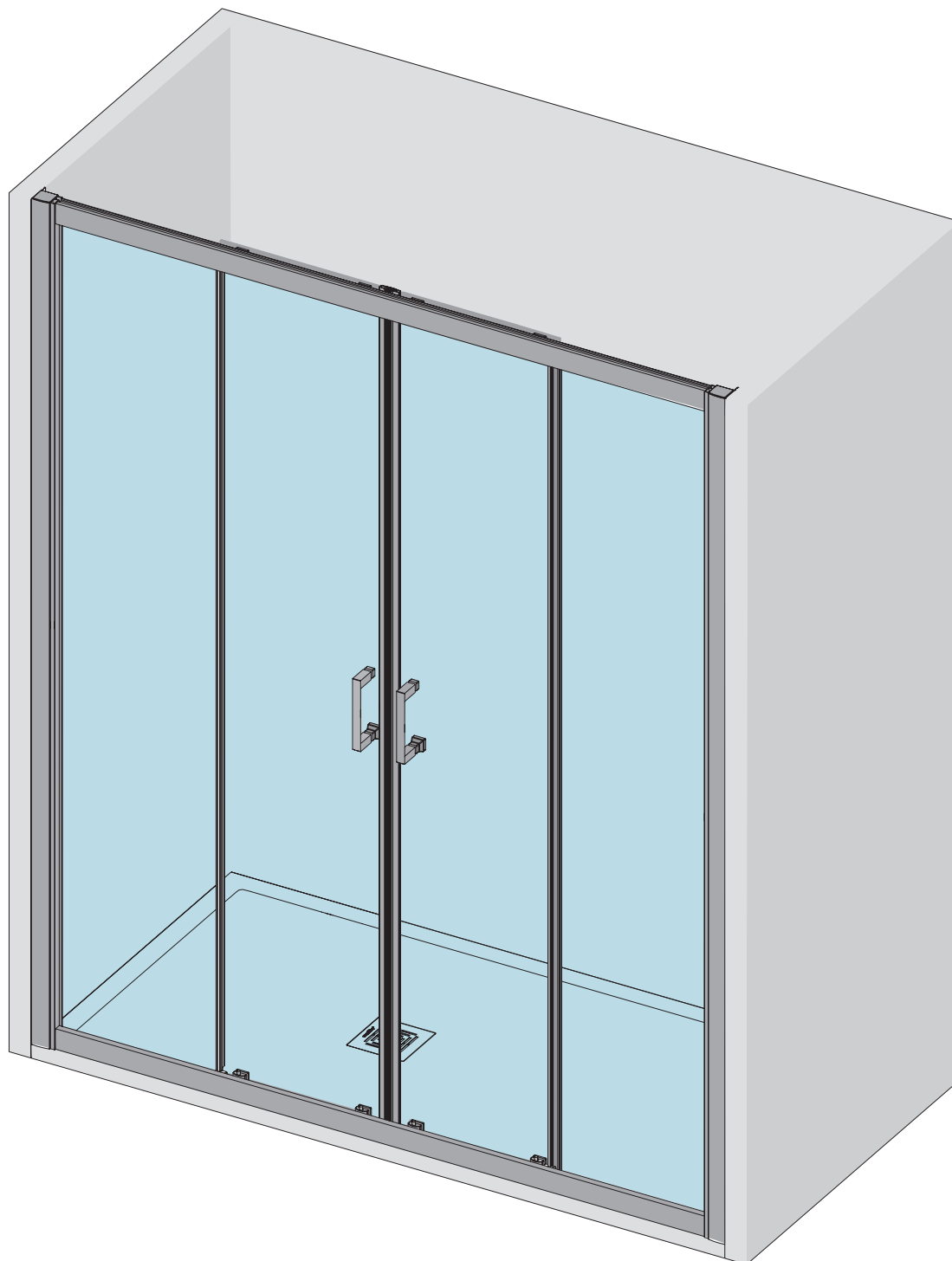


X-80 P

Instrucciones de instalación
Assembly instructions
Instructions de montage
Prescrizioni di montaggio



www.mundilite.com

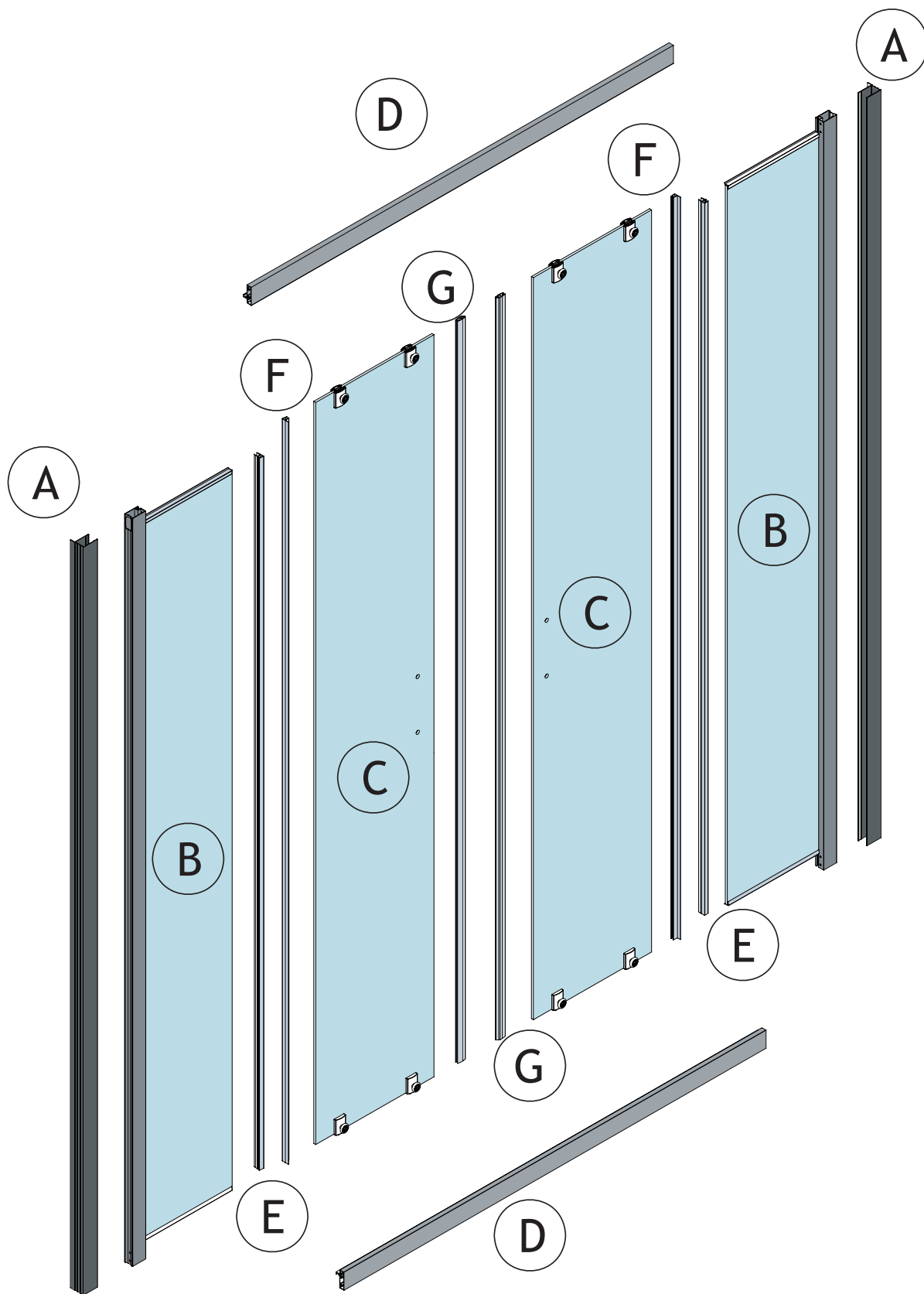
Apdo. de Correos 72

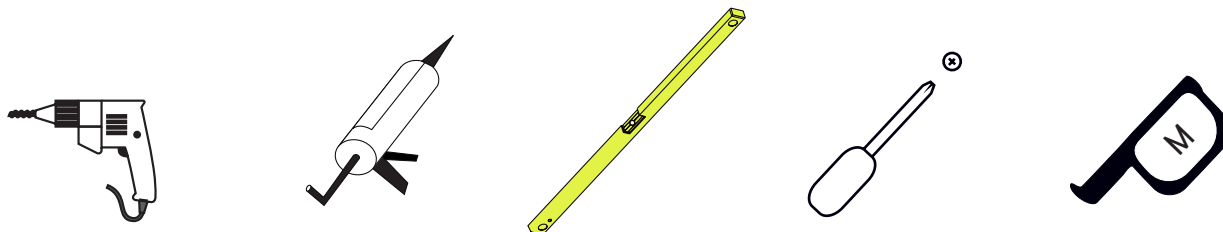
C/ Malvasia Parc. 9 y 11 - Polígono Industrial Pino Blay - 46380 Cheste - Valencia - Spain

Telfs +34 96 251 28 94 / +34 96 070 23 81

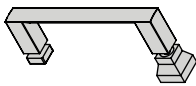
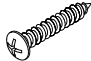
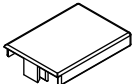

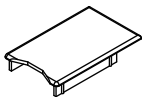

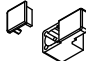

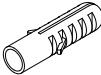
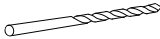
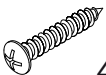
email: admon@mundilite.com


mundilite

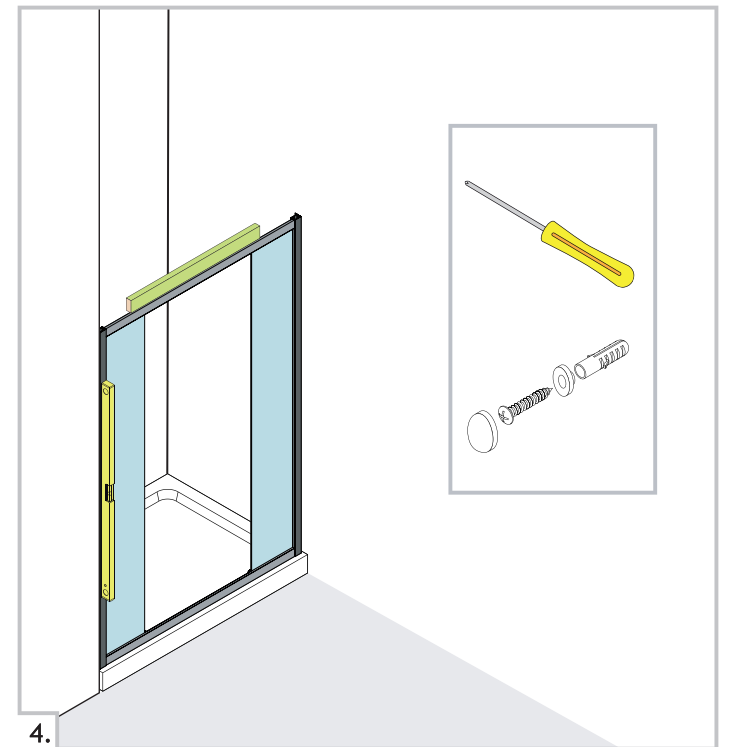
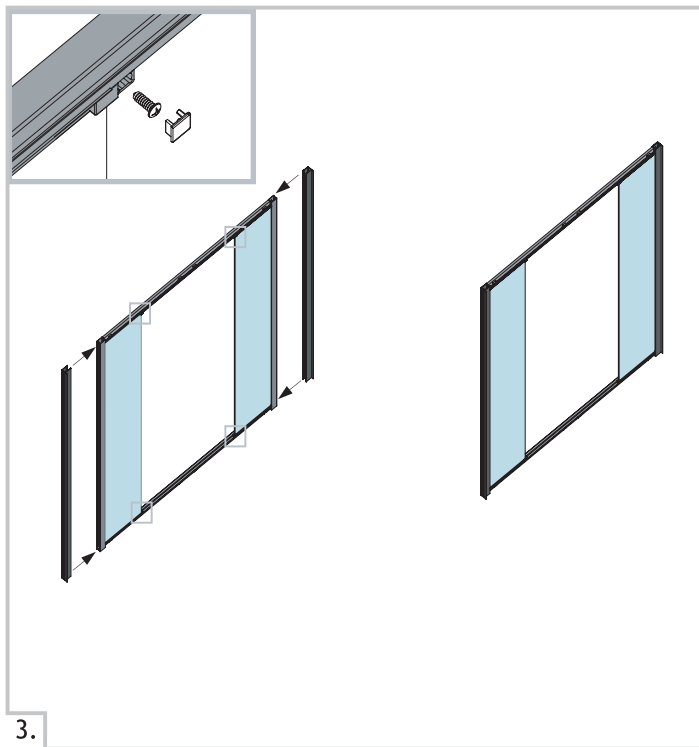
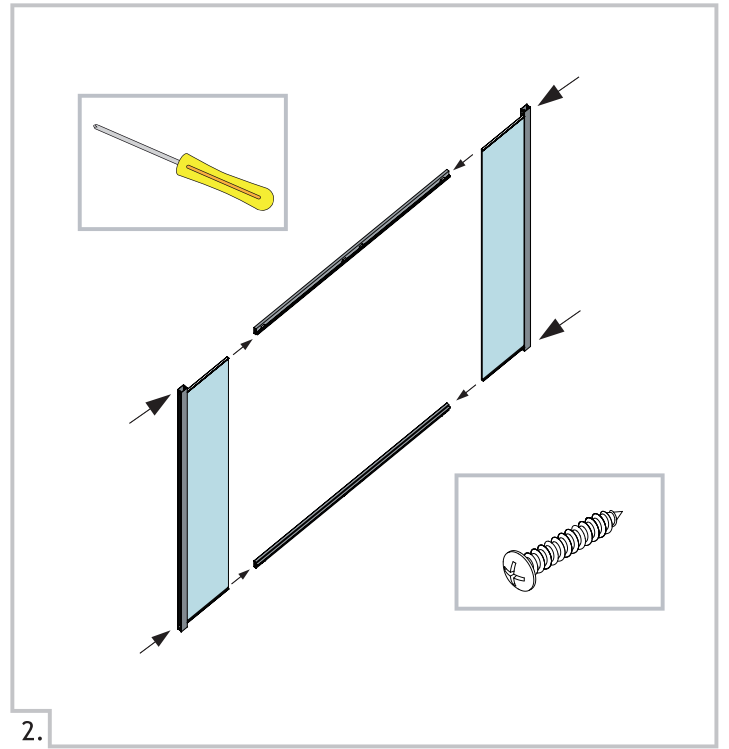
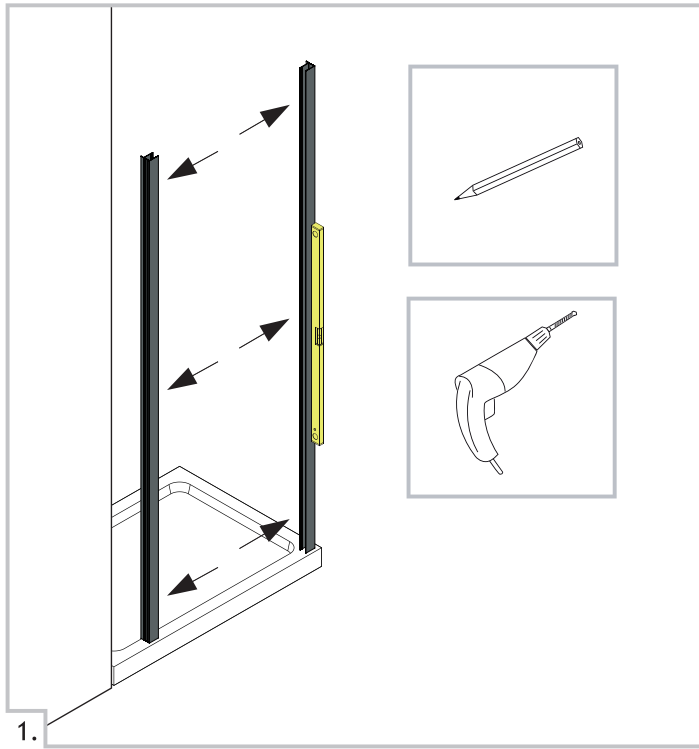


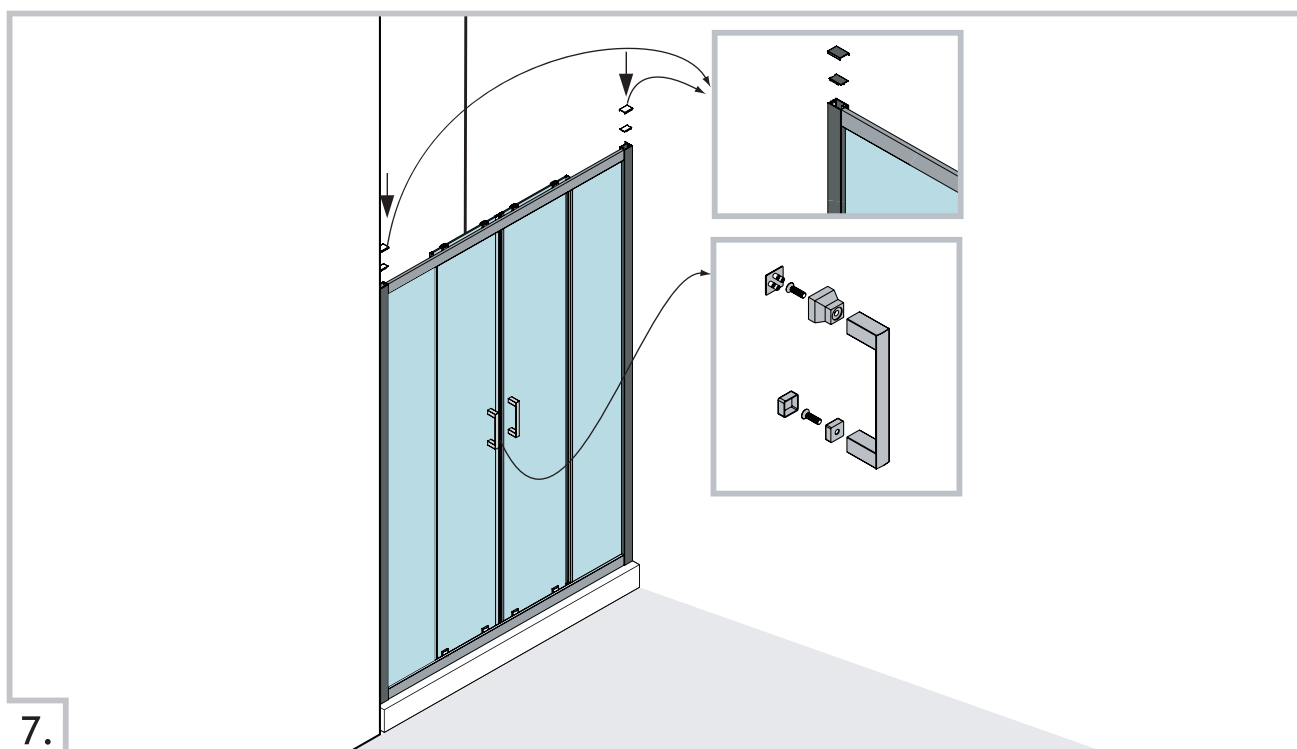
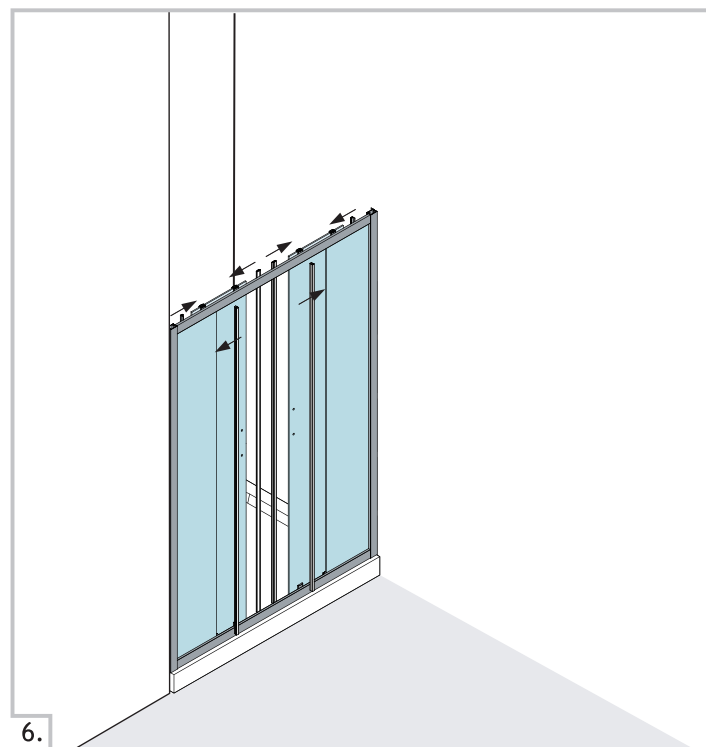
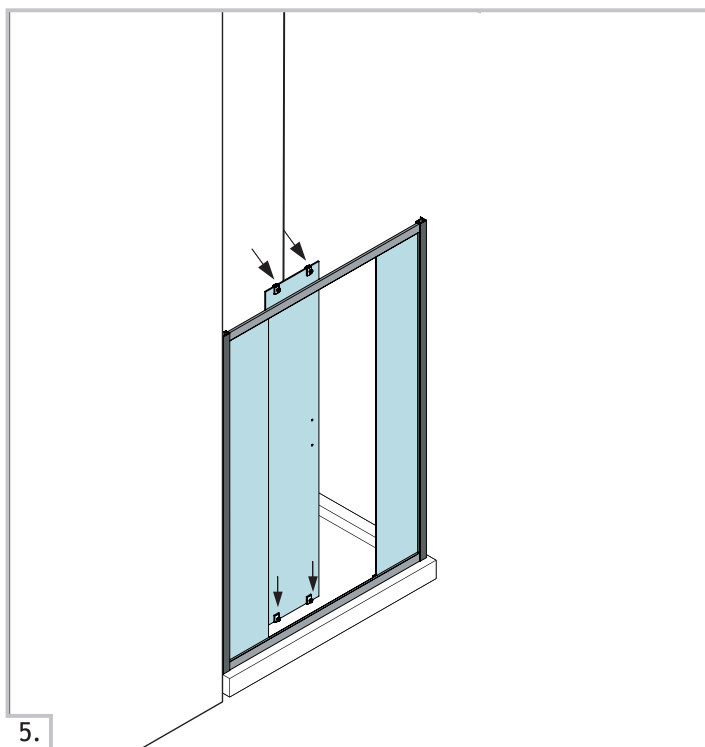


Equipamiento / Features / Équipement / Capitolato

Ref.		Quant.	Ref.		Quant.
H		2 Pc.	N	 4x20	8 Pc.
I		2 Pc.	O	 4x12	8 Pc.
J		2 Pc.	P		10 Pc.
K		4 Pc.	Q		10 Pc.
L		6 Pc.	R		1 Pc.
M	 4x30	6 Pc.			

X-80 P





X-80 P

