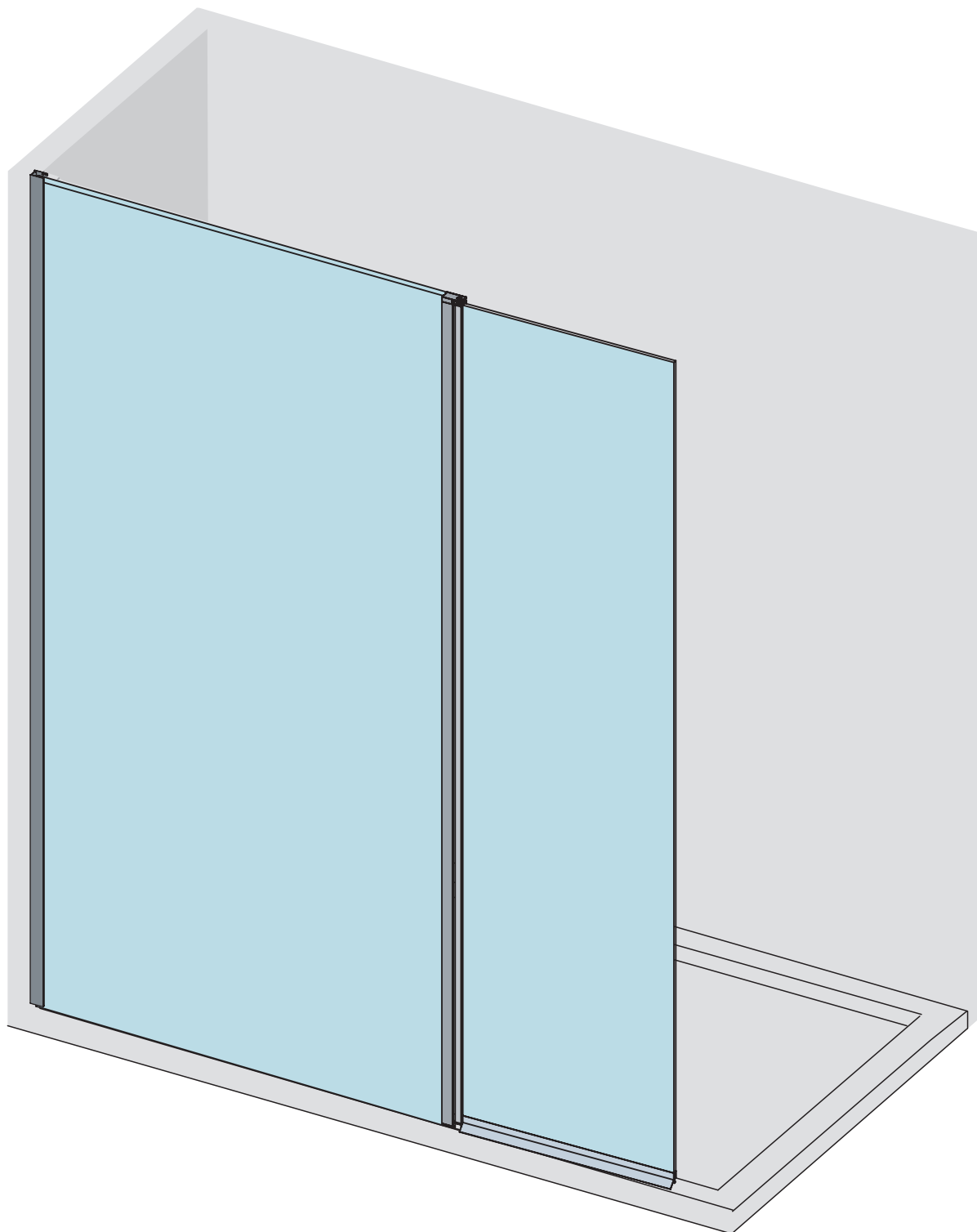


X-250

Instrucciones de instalación
Assembly instructions
Instructions de montage
Prescrizioni di montaggio



www.mundilite.com

Apdo. de Correos 72

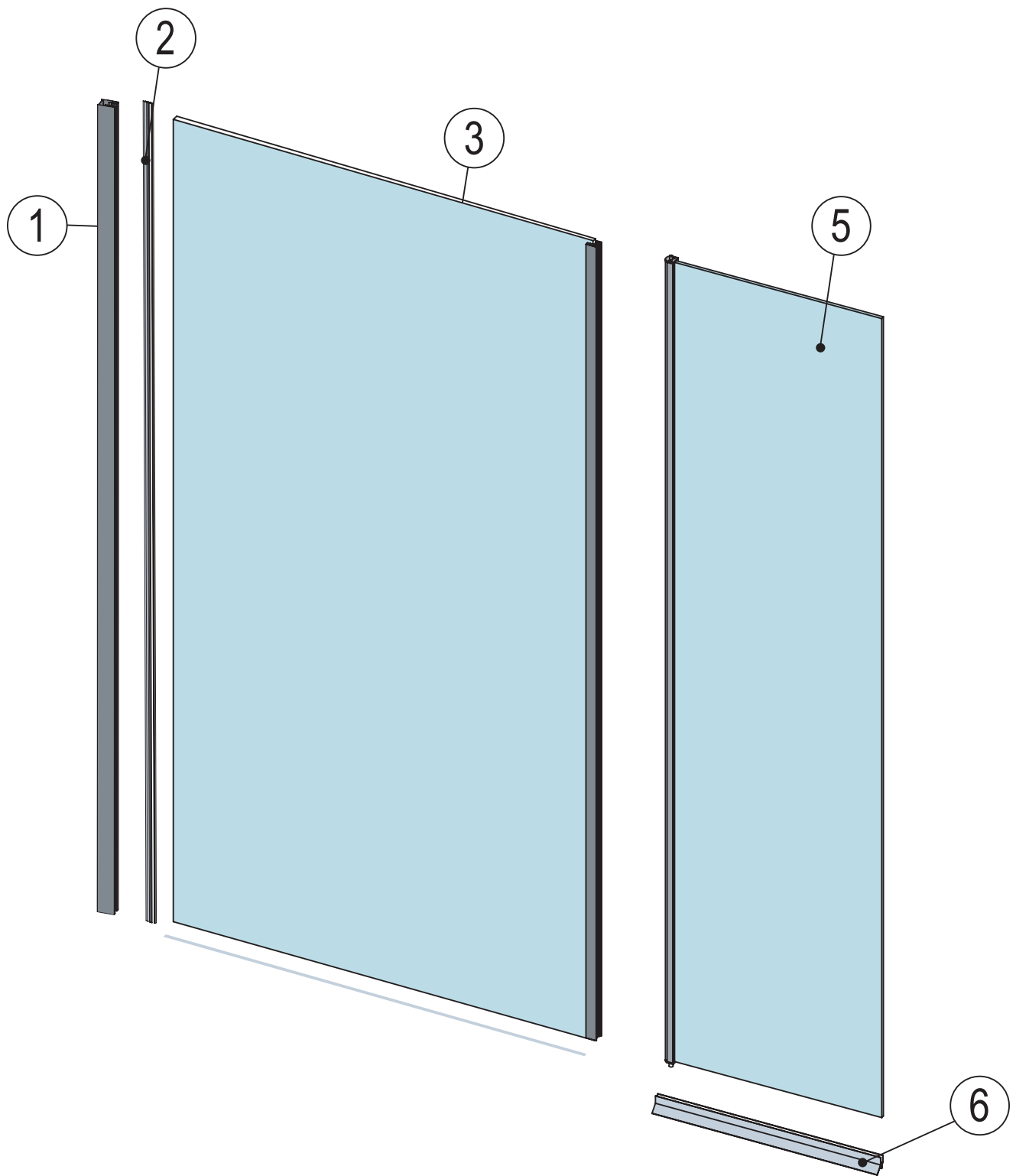
C/ Malvasia Parc. 9 y 11 - Polígono Industrial Pino Blay - 46380 Cheste - Valencia - Spain

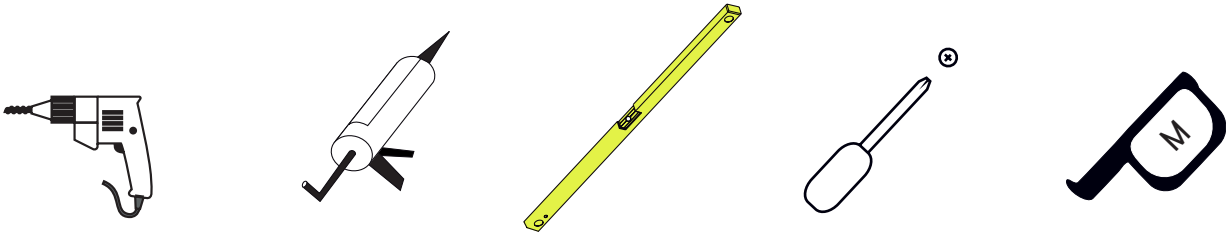
Tel: +34 96 251 28 94 / +34 96 070 23 81 - Fax: +34 96 251 14 78

email: admon@mundilite.com


mundilite

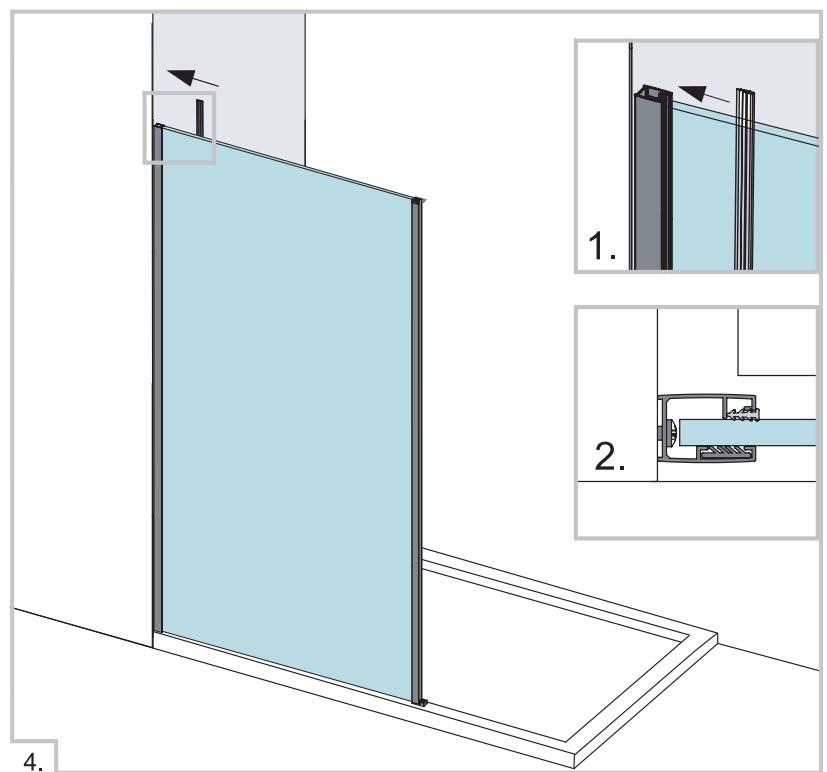
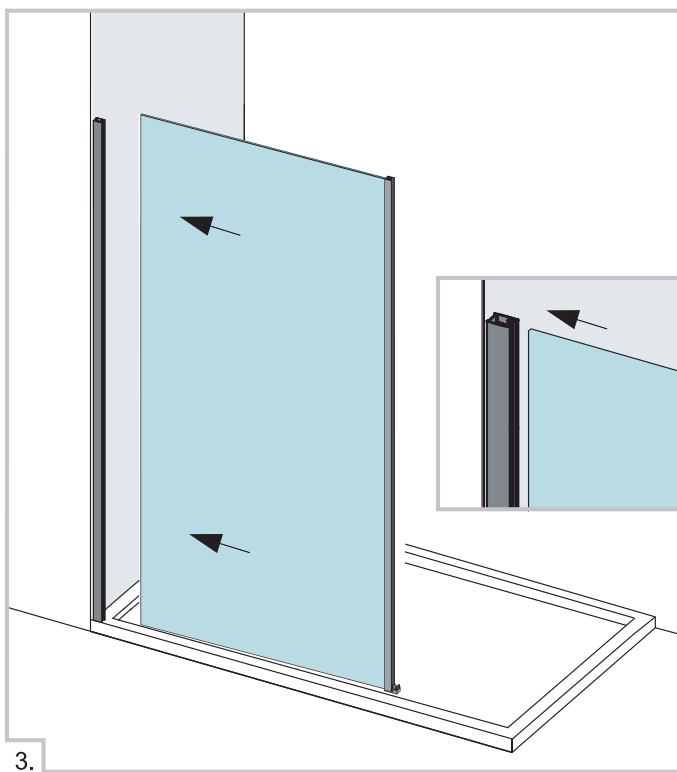
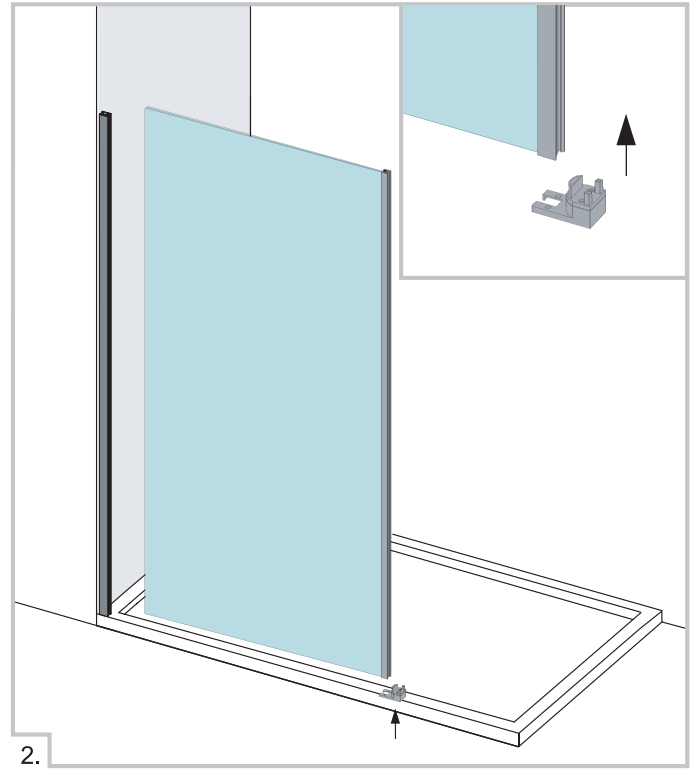
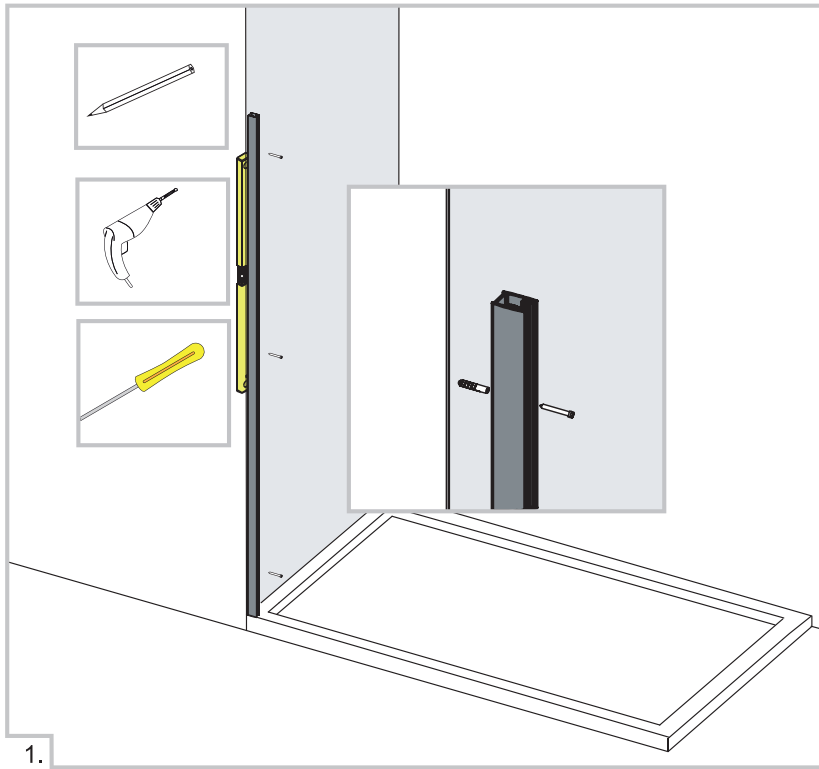
X-250

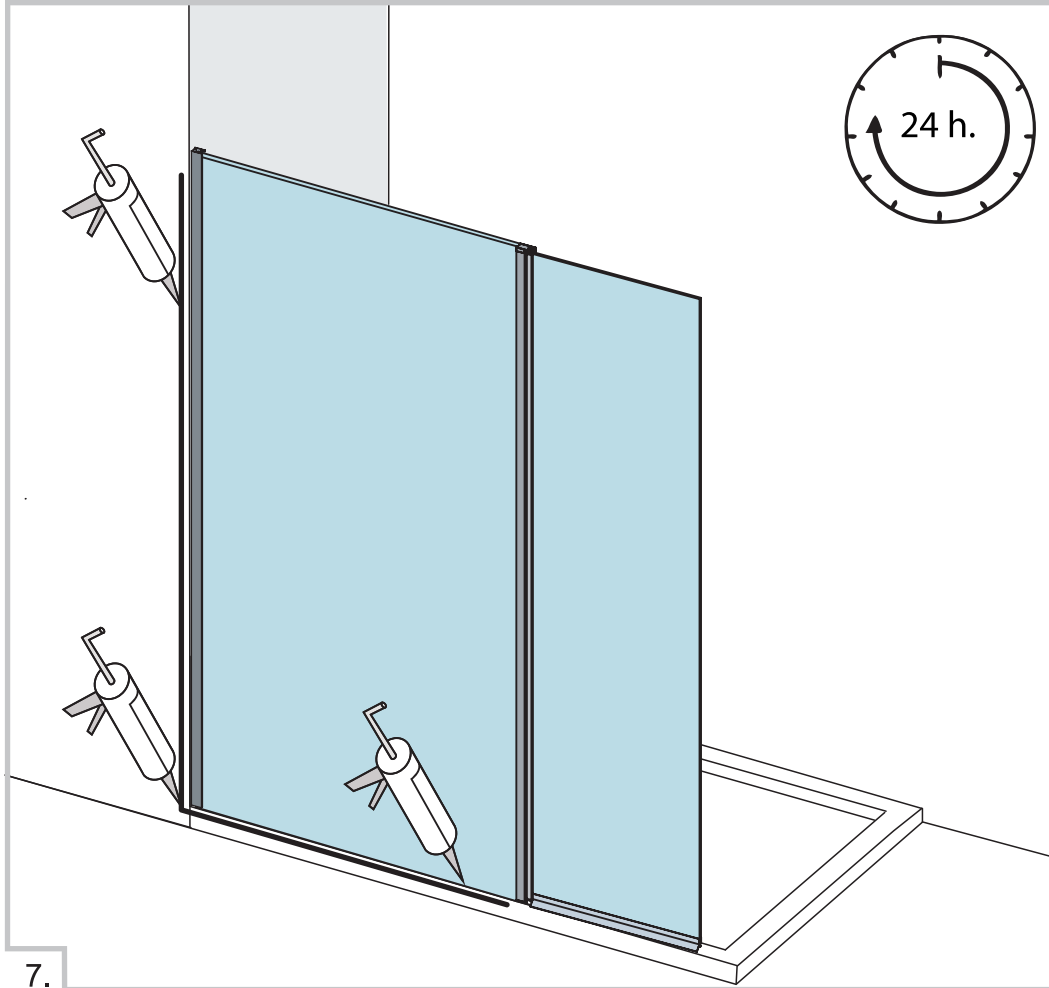
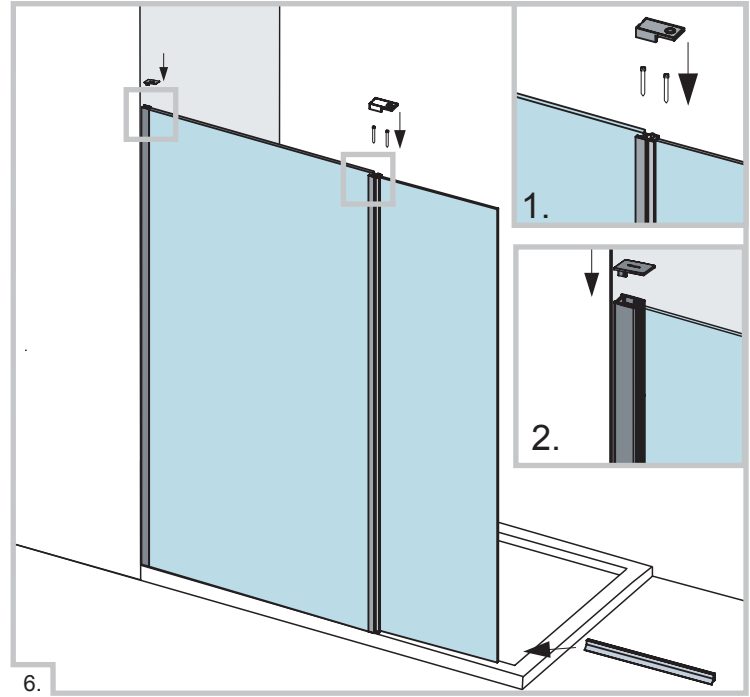
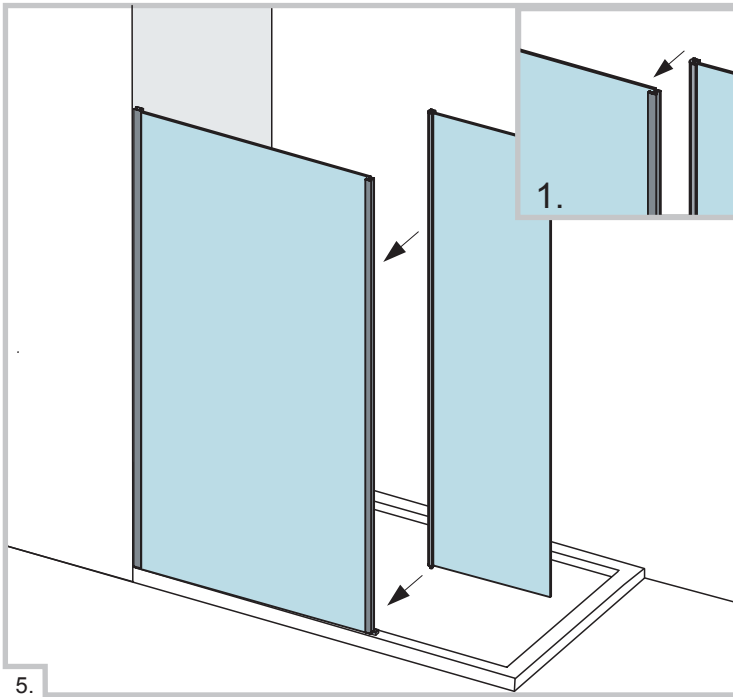




Ref.		Uds
4.		1
6.		1
7.	 4,2x32	3
8.		1
9.		1
10.		1
11.		3

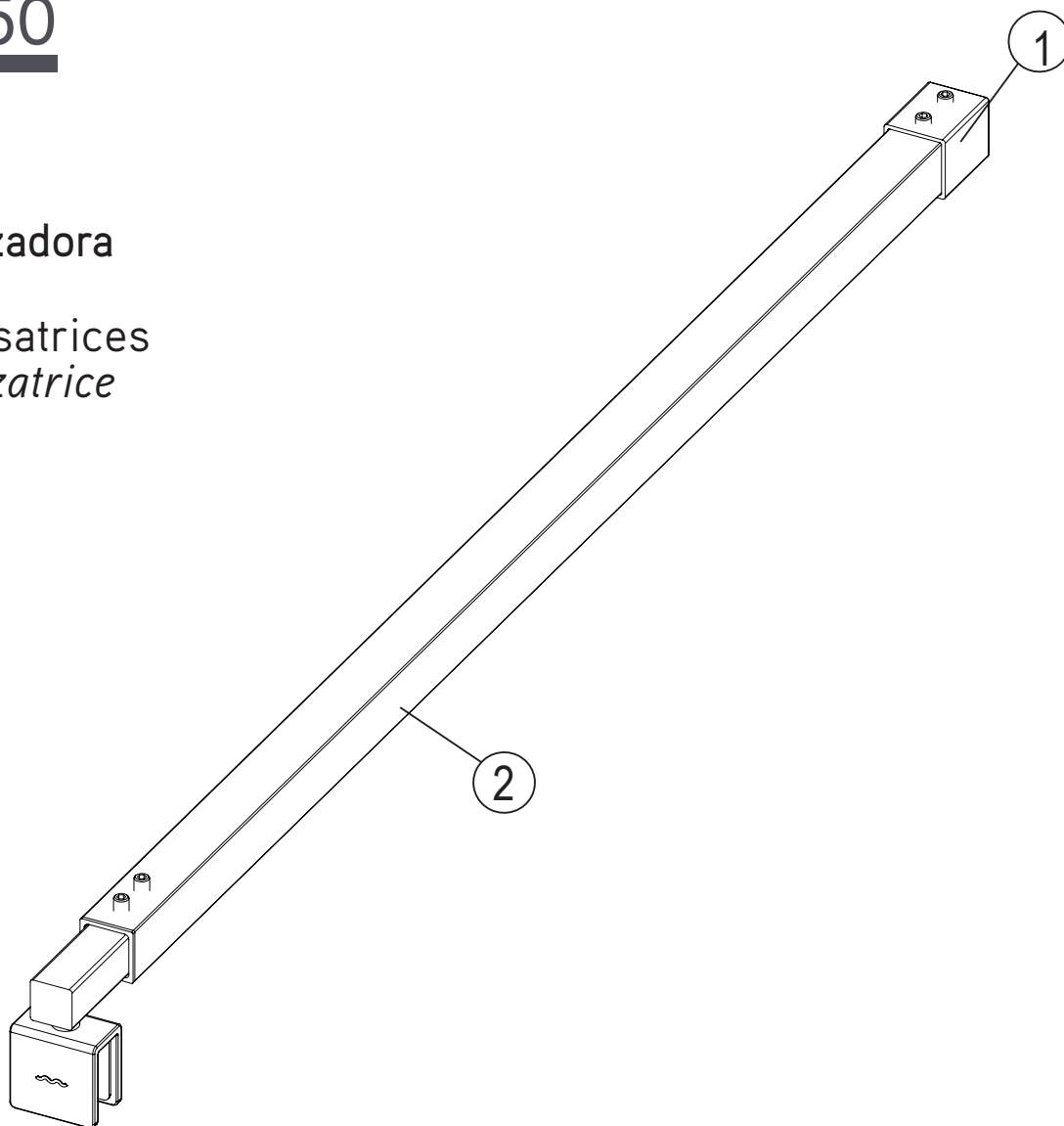
X-250



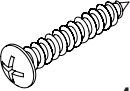
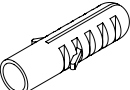



X-250

Barra estabilizadora
Support bar
Barres stabilisatrices
Barra stabilizzatrice



Equipamiento / *Features* / Équipement / *Capitolato*

Ref.		Uds.
3.	 4,2x32	1
4.		1
5.		2

