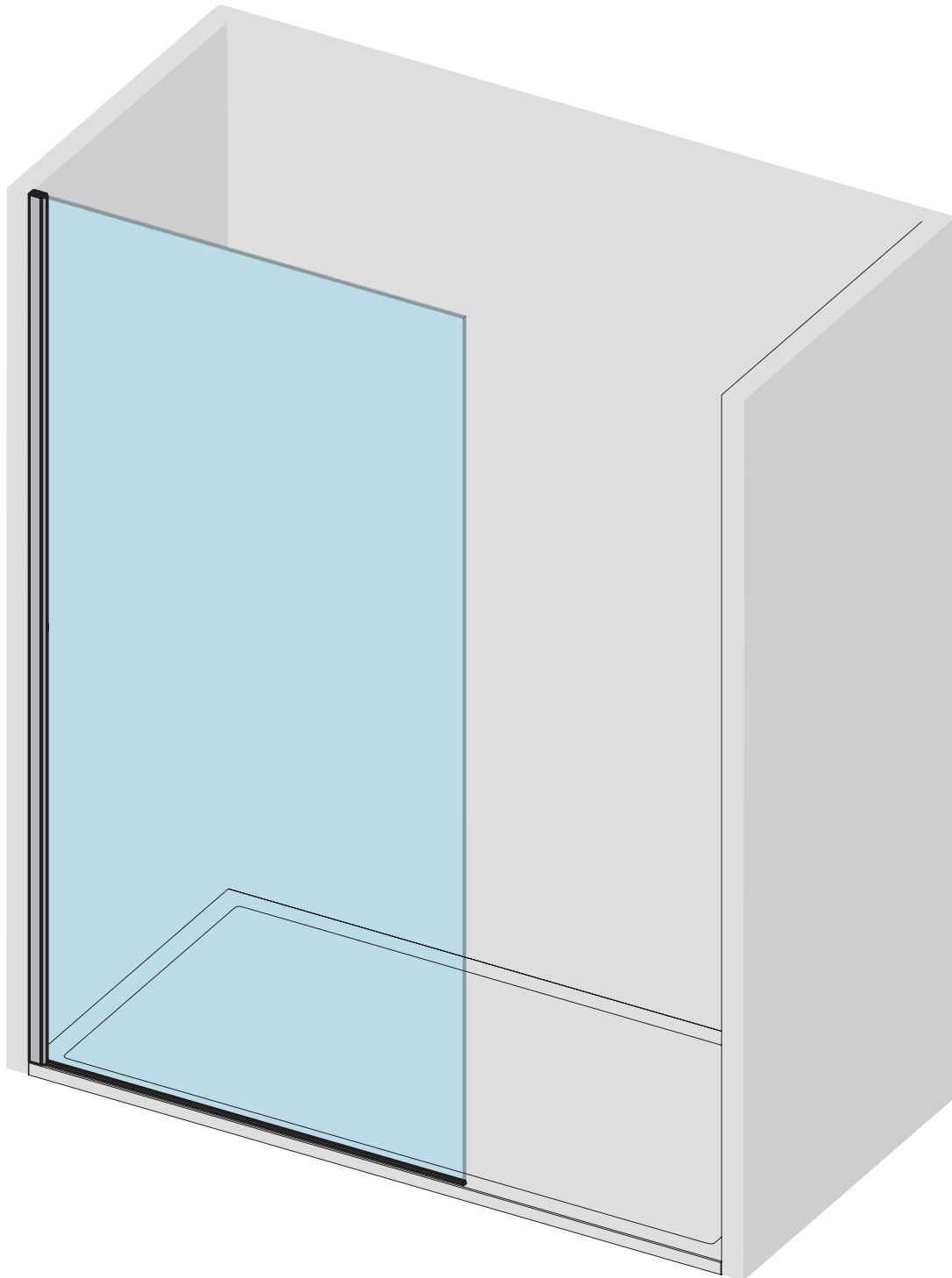


X-200 N

Instrucciones de instalación
Assembly instructions
Instructions de montage
Prescrizioni di montaggio



www.mundilite.com

Apdo. de Correos 72

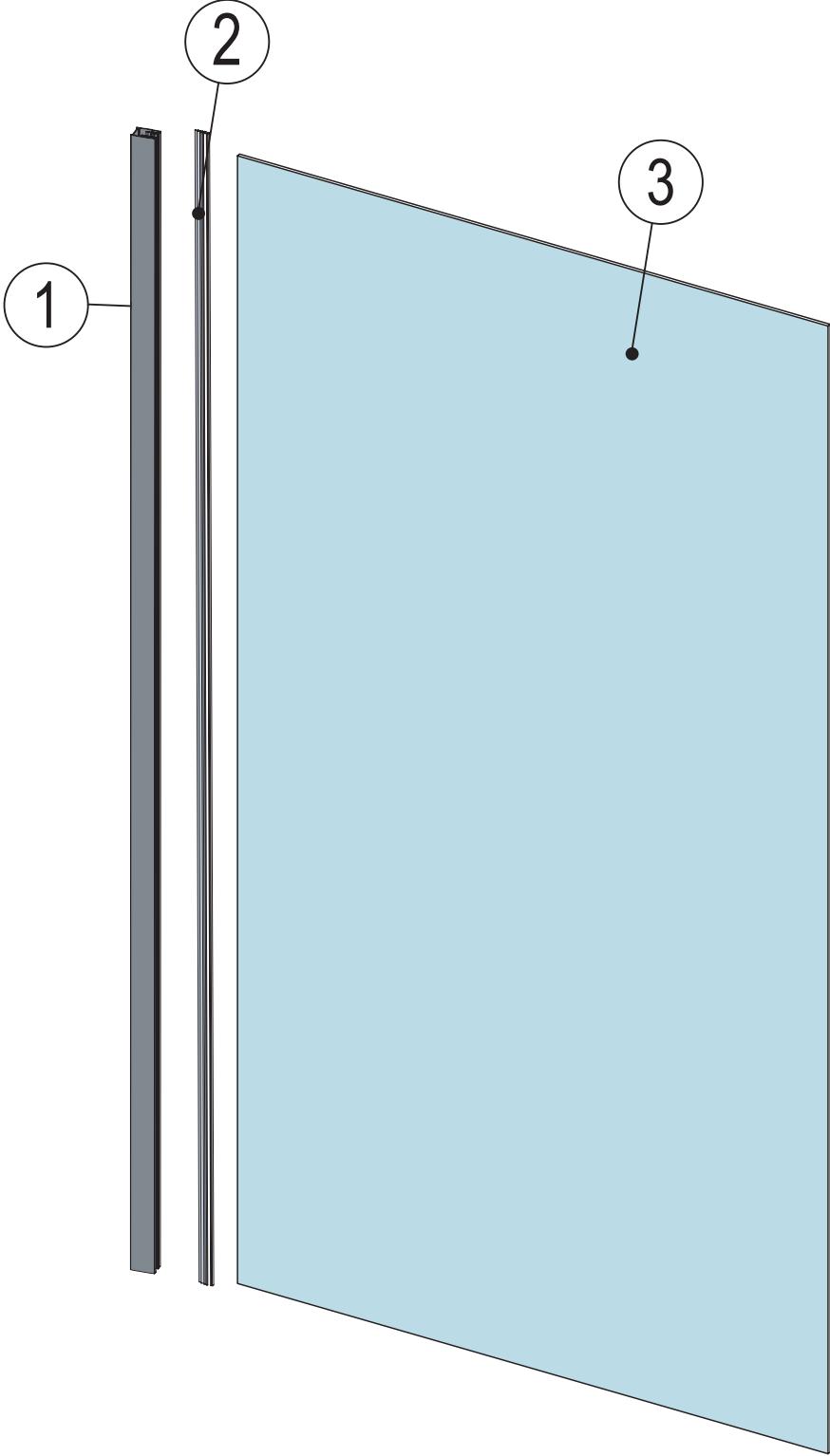
C/ Malvasia Parc. 9 y 11 - Polígono Industrial Pino Blay - 46380 Cheste - Valencia - Spain

Telfs +34 96 251 28 94 / +34 96 070 23 81 - Fax: +34 96 251 14 78

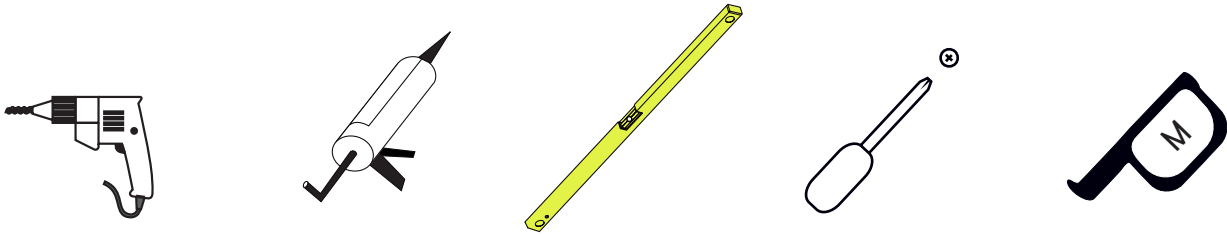
email: admon@mundilite.com


mundilite

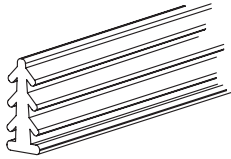
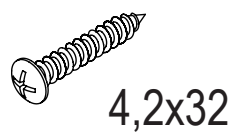
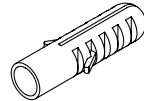

X-200 N



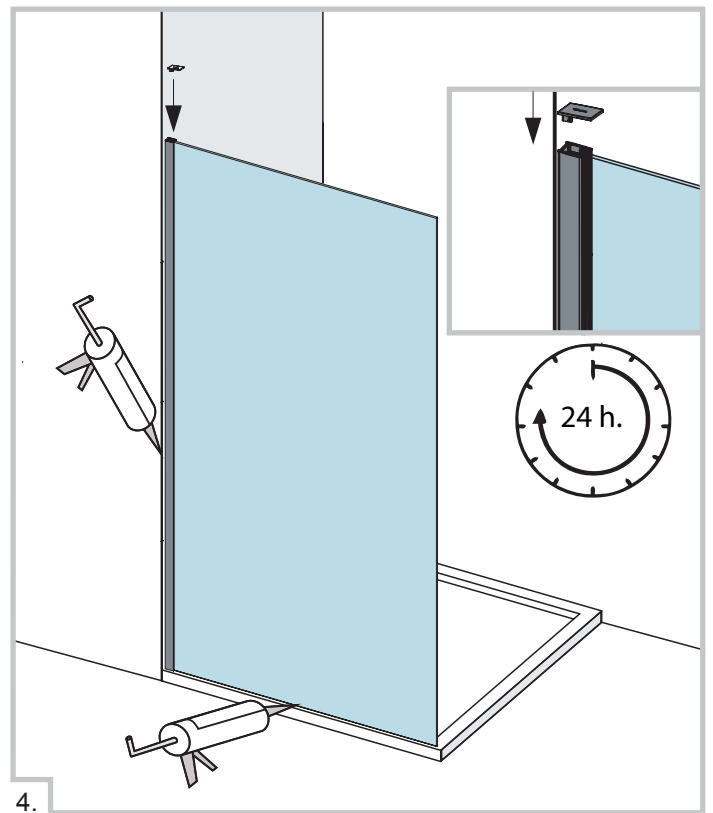
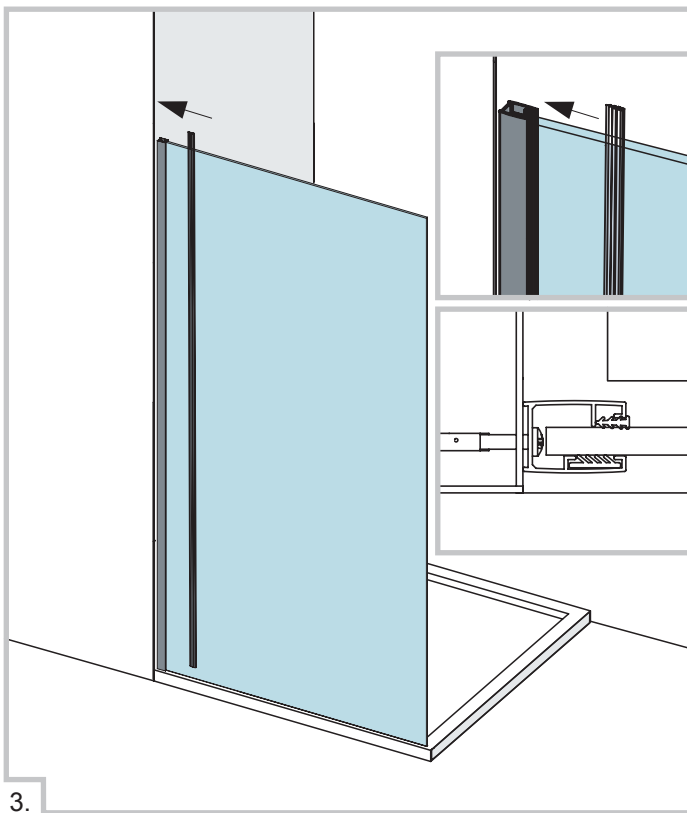
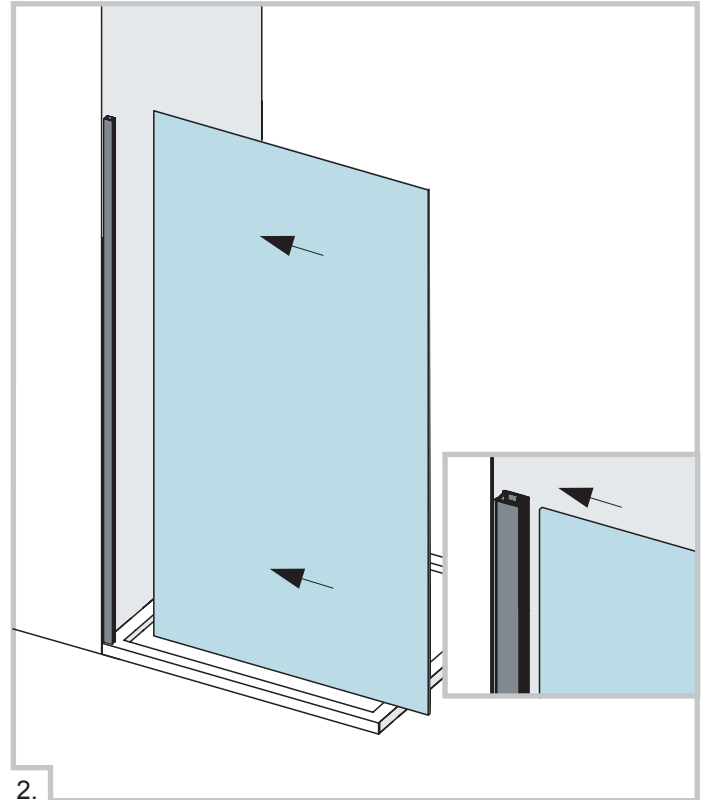
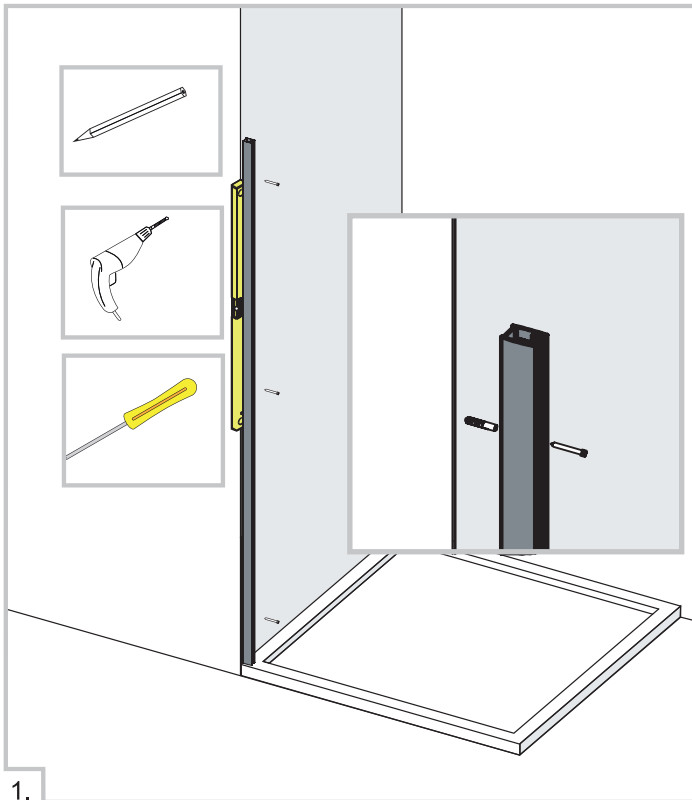
Herramientas / Tools / Outils / Strumenti di costruzione



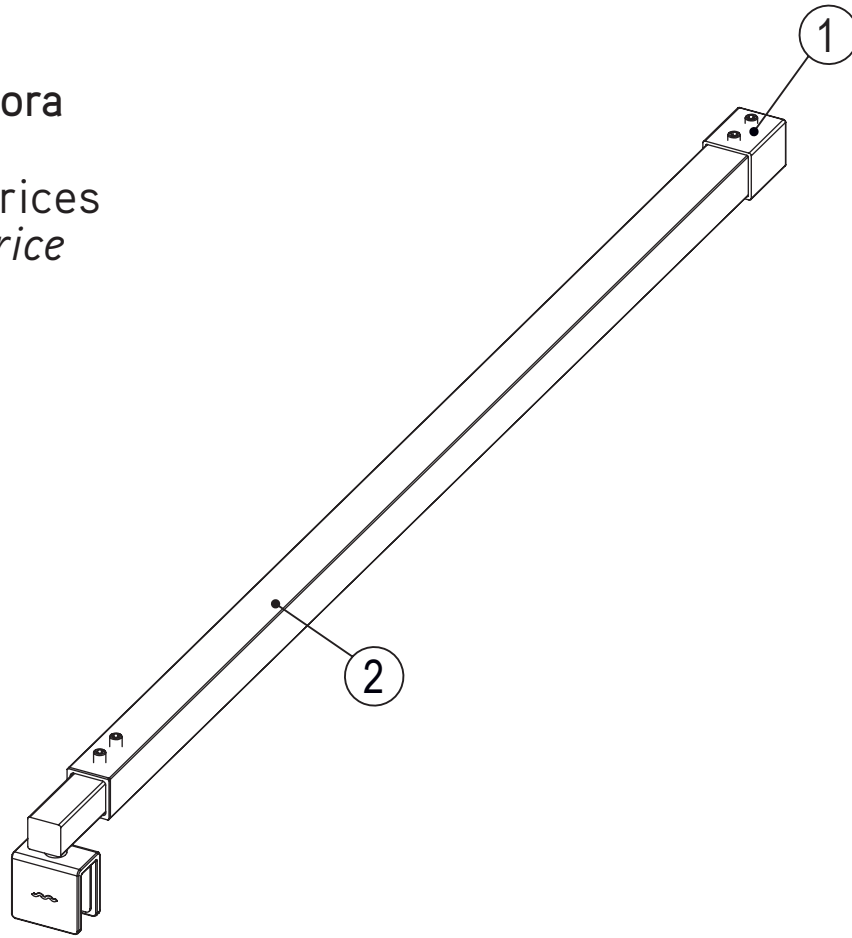
Equipamiento / Features / Équipement / Capitolato

Ref.		Uds.
4.		1
5.	 4,2x32	3
6.		3
7.		1

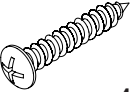
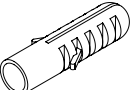

X-200 N



Barra estabilizadora
Support bar
 Barres stabilisatrices
Barra stabilizzatrice



Equipamiento / *Features* / Équipement / *Capitolato*

Ref.		Uds.
3.	 4,2x32	1
4.		1
5.		2

X-200 N

